

36 200 892



- rotary diverter
- rosette 60 mm
- with shut-off function

	Chrome	36 200 892-00 0010
	Brushed Platinum	36 200 892-06 0010
	Platinum	36 200 892-08 0010
	Brushed Durabronze (23kt Gold)	36 200 892-28 0010
	Matte Black	36 200 892-33 0010
	Brushed Champagne (22kt Gold)	36 200 892-46 0010
	Champagne (22kt Gold)	36 200 892-47 0010
	Brushed Chrome	36 200 892-93 0010
	Brushed Dark Platinum	36 200 892-99 0010

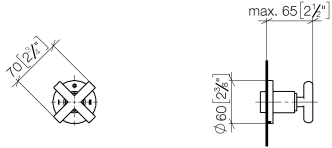
Required miscellaneous



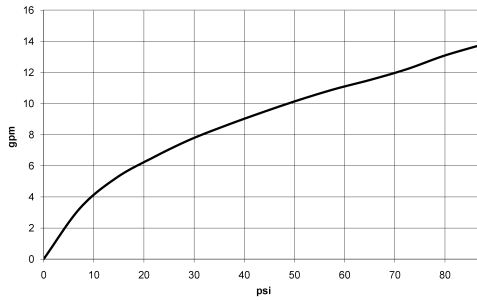
- Concealed two-way diverter -** 35 202 970-90  
 •max. recess depth 160 mm 0010  
 •min. recess depth 85 mm

36 200 892

mm [inches]



### Flow rate chart



### Codes & Standards

California Energy  
Commission  
(CEC)



## TARA Concealed two-way diverter - Chrome

---

TARA

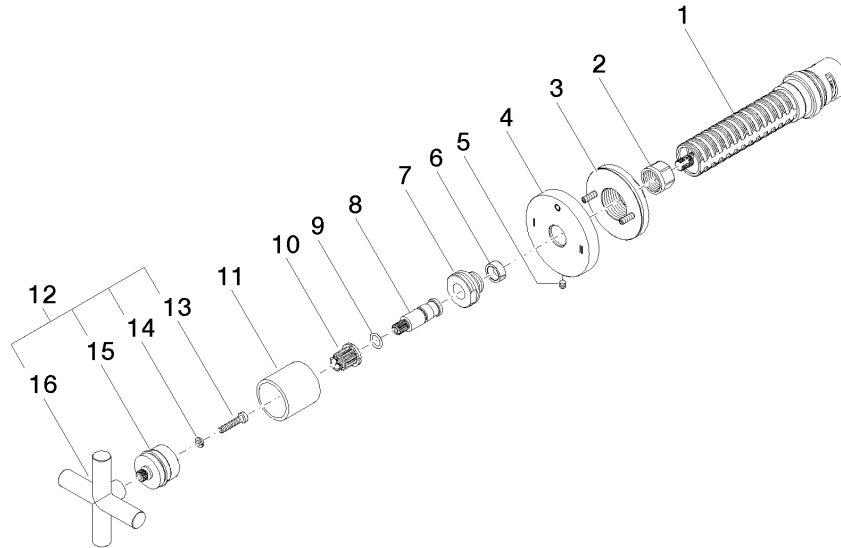
36 200 892

### Certificates

---

IAPMO\_4976 (7).

36 200 892



### Spare parts list

No.	Item Number	Name	Quantity used	Delivery time
1	90 90 03 306 10 90	diverter	1	2
2	90 23 30 023 00 90	nut	1	2
3	90 21 02 181 00 90	disc	1	2
4	09 27 89 120-00	rosette	1	60
5	09 31 11 294 90	pin	1	2
6	90 14 15 020 03 90	ring	1	2
7	09 24 05 002 90	nipple	1	2
8	09 29 06 022 90	spindle	1	2
9	90 14 10 060 00 90	seal	1	2
10	90 12 12 002 00 90	fixing cap	1	2
11	09 21 02 144-00	sleeve	1	10
12	90 20 89 010 10-00	handle	1	10
13	90 30 30 075 00 90	screw	1	2
14	90 30 11 029 00 90	disc	1	2
15	90 12 12 219 00-00	base	1	10
16	09 20 89 010-00	handle	1	60